

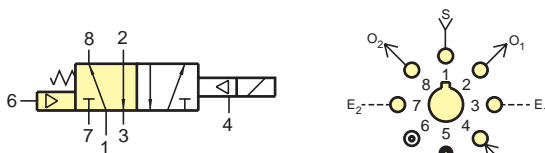
ET PILOTED 4-WAY VALVES



R-481-□



For more information please see page 260 in the Modular Valve section of this catalog.



Note: Supply pressure must be applied to both ports 1 & 4. Minimum pressure on port 4 should be 40 psig.

Type: 4-way combination electronic and modular spool type interface valve. Fully ported ET-3 & R401 hybrid

Medium: Air, water, or oil; pilot - air only

Input Pressure: Pilot - 40 psig minimum
Working - 0-150 psig

Air Flow: Valve - 9 scfm @ 100 psig

Voltages: R-481-6 6 VDC
R-481-12 12 VDC
R-481-24 24 VDC

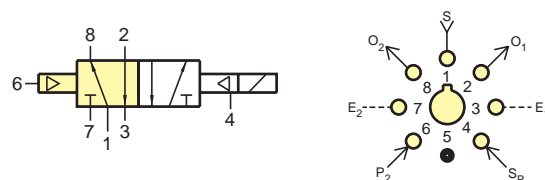
Mounting: Uses Octoport base and two captivated screws

Ports: Valve has patented Octoport system

R-482-□



For more information please see page 260 in the Modular Valve section of this catalog.



Note: Supply pressure must be applied to both ports 1 & 4. Minimum pressure on port 4 should be 40 psig.

Type: 4-way combination electronic and modular spool type interface valve. Fully ported ET-3 & R402 hybrid

Medium: Air, water, or oil; pilot - air only

Input Pressure: Pilot - 40 psig minimum
Working - 0 to 150 psig

Air Flow: Valve - 9 scfm @ 100 psig

Voltages: R-482-6 6 VDC
R-482-12 12 VDC
R-482-24 24 VDC

Mounting: Uses Octoport base and two captivated screws

Ports: Valve has patented Octoport system

ET-C48 ET-C120

Black molded lug connectors are available for easy push on connection ET-C48 is 48" in length, ET-C120 is 120" in length

ET Valve Connectors



3831

Insulated crimp-on spade lug connectors are available for wiring up leads for connecting electronic circuit to ET style valves. Accepts #22, #24, or #26 wire



C2-RB18 C2-RB120

AMP connector #103959-1 with 18" or 120" wire leads for EC/ECO and EI/EIO valves

EC & EI Valve Connectors

